



**27 Bimbadeen Crescent FRENCHS FOREST NSW**

3 1 1

Great home for first-time buyers looking to secure a solid home in a fantastic street...

- \* Sunny Northerly aspect with some views
- \* Open plan kitchen and meals/family room
- \* Separate living area with large windows allowing ample natural light
- \* The kitchen opens out to an Undercover entertaining area
- \* Lock up garage - potential to make a huge living area
- \* Great home - great location - great value!

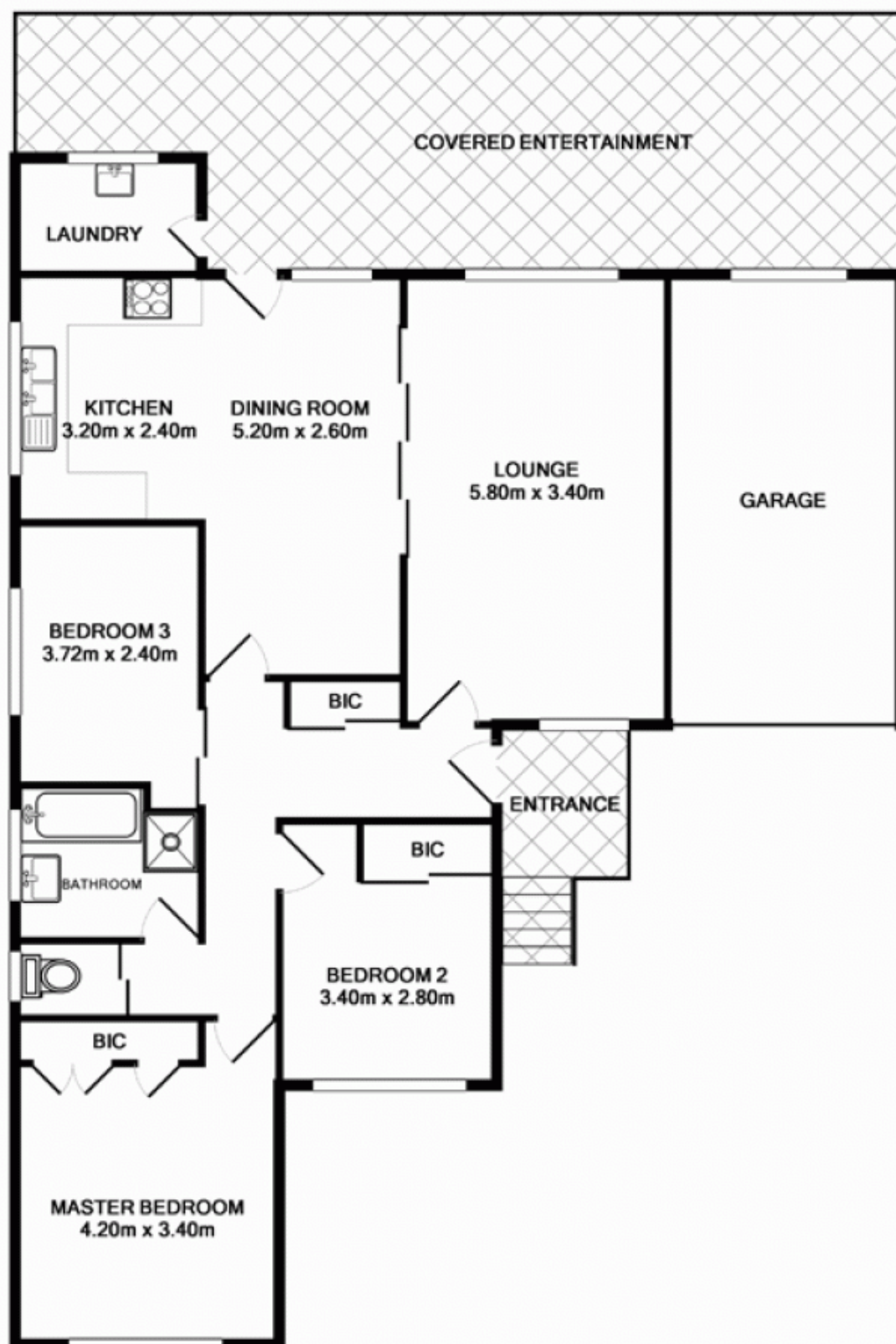
**Land Size** : 613 sqm

**View** : <https://www.skylinerealestate.com.au/sale/nsw/northern-beaches/frenchs-forest/residential/house/5823783>



**Stuart Bath**  
02 9452 3444





TOTAL APPROX. FLOOR AREA 109.8 SQ.M. (1182 SQ.FT.)  
Measurements are approximate. Not to Scale. For illustrative purposes only.