



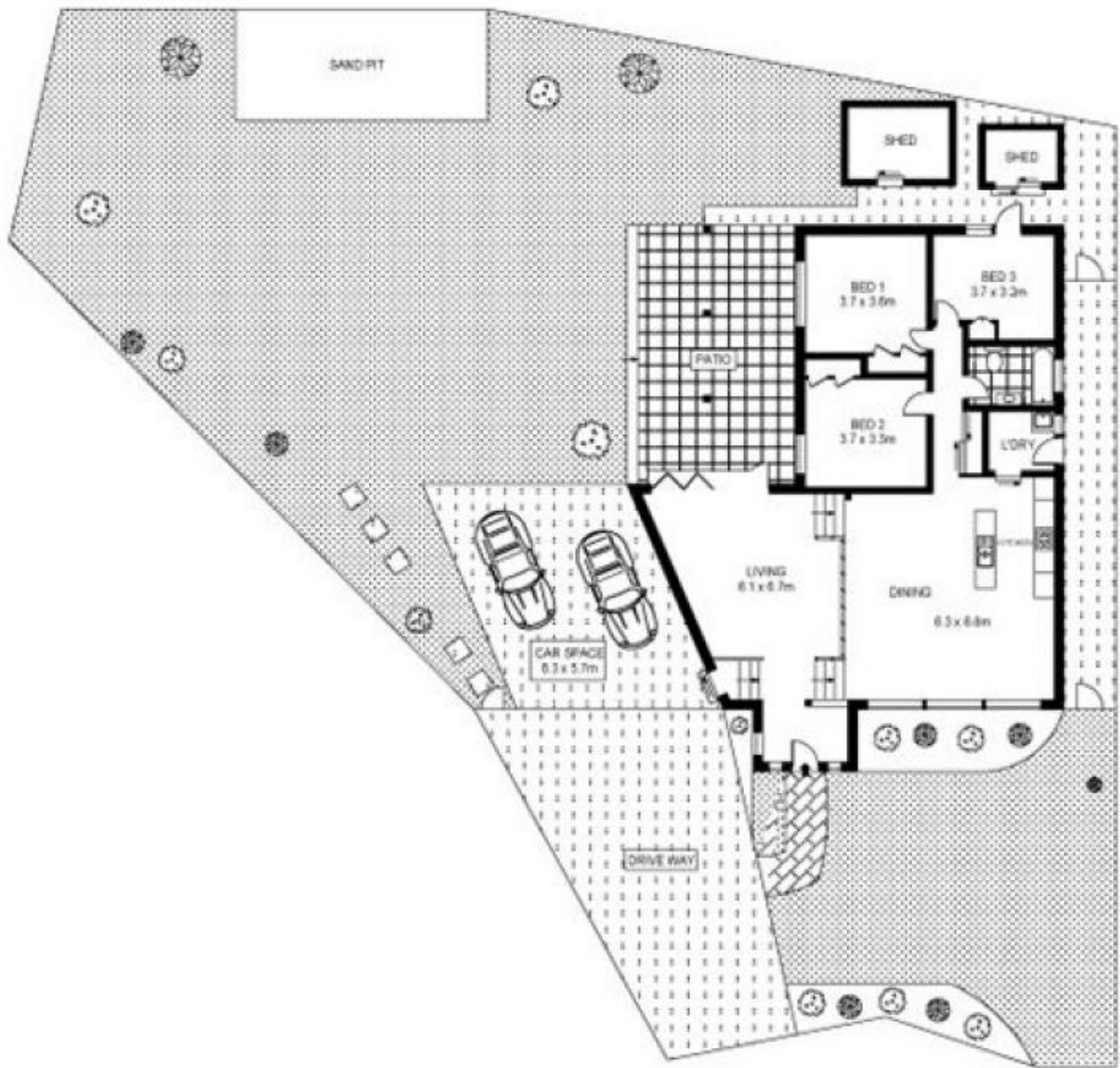
**6 Opala Street BELROSE NSW**

3 1 2

A home of generous, open spaces and bright interiors, tastefully adapted to modern family living. Positioned in a very popular location only moments from shops, schools and transport.

- \* Split level living area with large bi fold door opening to the under cover entertaining area
- \* Open plan kitchen meals area, full modern bathroom
- \* Three good size bedrooms (Built ins in all)
- \* Fantastic level rear yard ideal for kids and pets
- \* Double lock up garage.

**Land Size** : 701 sqm  
**View** : <https://www.skylinerealestate.com.au/sale/nsw/northern-beaches/belrose/residential/ho use/5823793>



GROUND FLOOR



SCALE (METRES)

PLANS SHOWN ONLY INDICATIVE OF LAYOUT. DIMENSIONS ARE APPROXIMATE.  
Floor plans by [egpropertymarketing.com.au](http://egpropertymarketing.com.au)

INT : 146.20m<sup>2</sup>

