

23 Allworth Drive DAVIDSON NSW

5 4 2

SOLD!! Nestled in one of Davidson's most sought after streets and set on the door step of the National Park is this ultra modern family residence. Featuring light filled and spacious living areas with a versatile floor plan and perfect for dual living / in law accommodation.

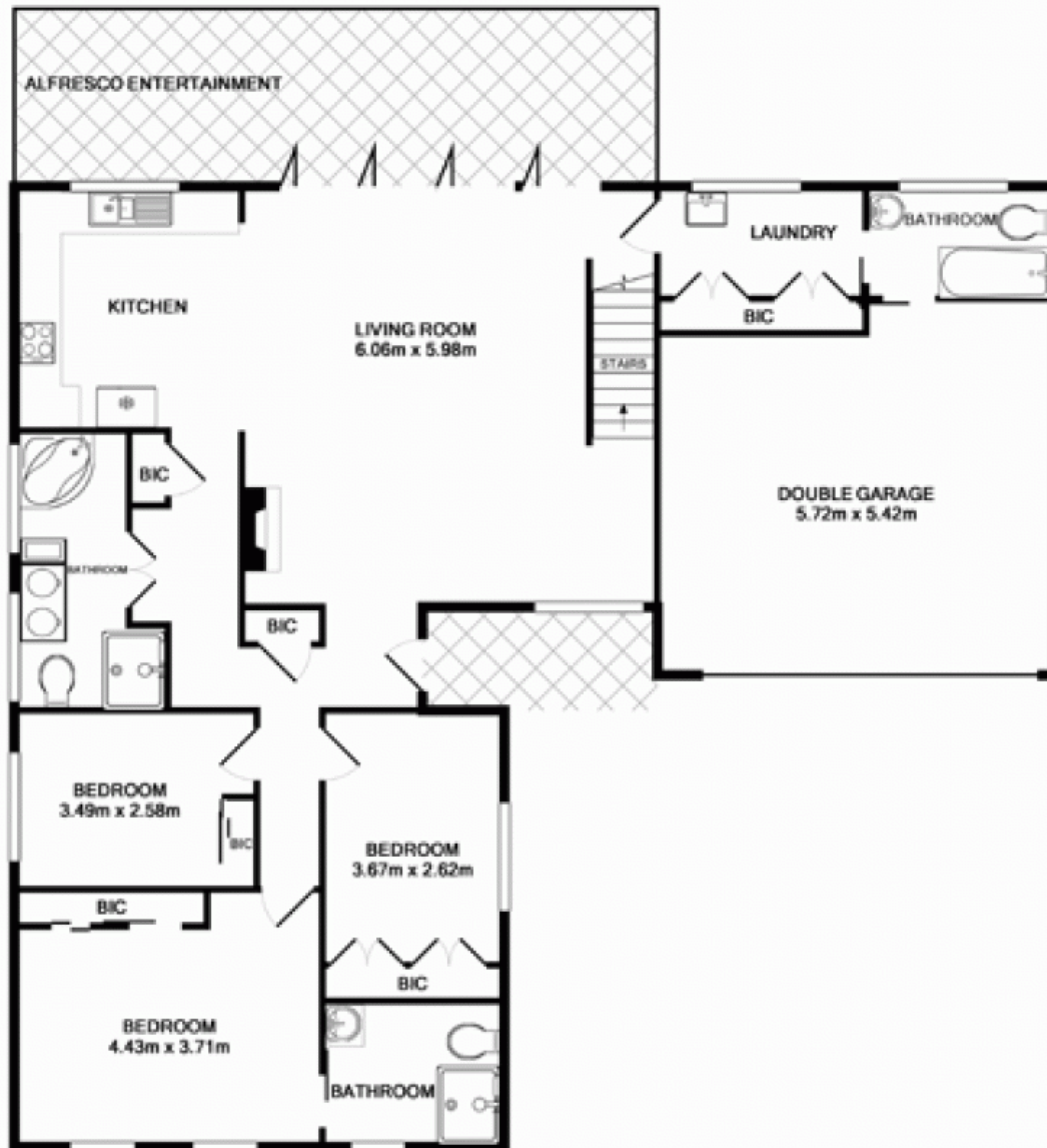
Land Size : 734 sqm
View : <https://www.skylinerealestate.com.au/sale/nsw/northern-beaches/davidson/residential/house/5823799>

Nothing has been spared in this immaculate home and features:

- Five bedrooms and four modern bathrooms with spa baths.
- Open plan and separate living areas opening to entertainment terrace with idyllic views overlooking the National Park.
- Modern kitchens with Caesar Stone benches and stainless steel appliances.
- Double Lock up Garage with room for other storage.



BASEMENT LEVEL
 APPROX. FLOOR
 AREA 83.9 SQ.M.
 (903 SQ.FT.)



GROUND FLOOR
 APPROX. FLOOR
 AREA 149.4 SQ.M.
 (1608 SQ.FT.)
 TOTAL APPROX. FLOOR AREA 233.3 SQ.M. (2511 SQ.FT.)
 Measurements are approximate. Not to Scale. For illustrative purposes only.