



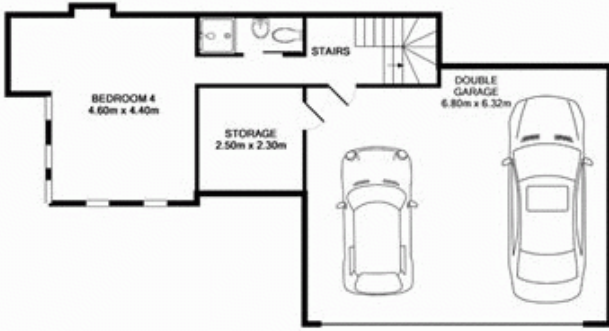
**1 Elphinstone Place DAVIDSON NSW**

4 3 2

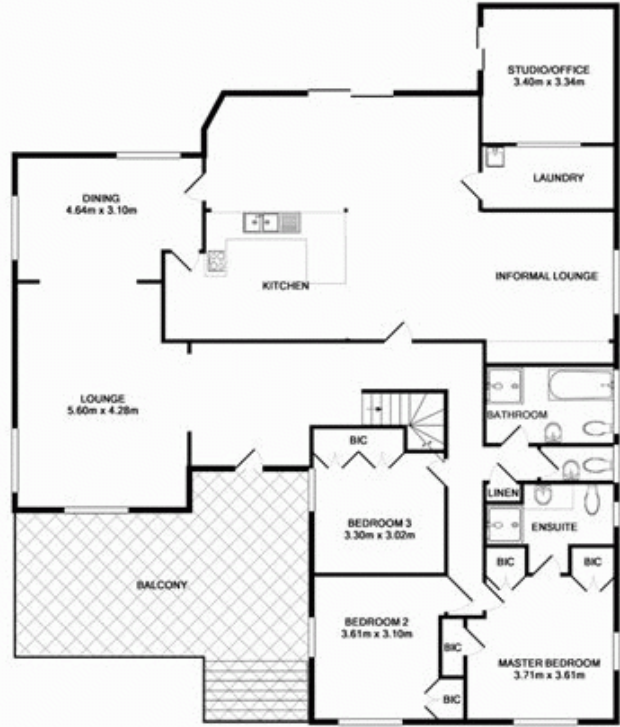
SOLD!! Impressive in both proportion and appeal, this immaculate property constructed of double brick and a flexible floor plan is ideal for a home business/office and is sure to impress.

- Expansive and light filled formal living areas, with separate family room
- Four double bedrooms, all with built-ins and three bathrooms
- Spacious kitchen with meals area flowing out to garden and covered entertaining area
- Double garage with auto door and separate workshop
- Separate studio ideal for home office/business with its own entrance
- Other appealing features include schools, parks, city transport all nearby. Two street access is perfect for tradespeople, boats, caravans etc. Timber floor throughout

**Land Size** : 700 sqm  
**View** : <https://www.skylinerealestate.com.au/sale/nsw/northern-beaches/davidson/residential/house/5823821>



DOWNSTAIRS  
APPROX. FLOOR  
AREA 82.8 SQ.M.  
(887 SQ.FT.)



GROUND FLOOR  
APPROX. FLOOR  
AREA 186.5 SQ.M.  
(2017 SQ.FT.)  
TOTAL APPROX. FLOOR AREA 268.5 SQ.M. (2890 SQ.FT.)  
Measurements are approximate. Not to Scale. For illustrative purposes only.