



**37 Parni Place Frenchs Forest NSW**

3 2 2

Peacefully positioned in the sought after Bantry Bay area, this dual level home offers a spacious floorplan with light filled living areas opening to balconies on both sides

- Three good size bedrooms with two bathrooms
- Upstairs features open plan kitchen, generous lounge and dining with open outlook both ways
- Large separate rumpus room plus double carport with undercover access
- Ample storage, lovely district views to the City plus much more
- Super rear garden with sunny northerly aspect - ideal for kids and pets
- Short walk to shops, public transport & schools
- Large 727sq m block

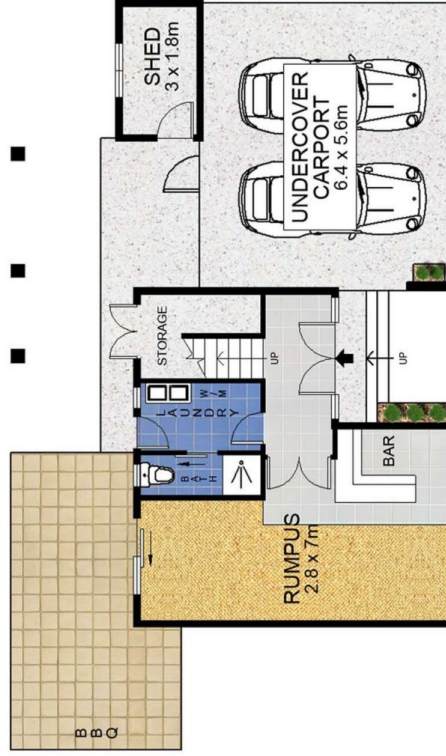
**Price** : \$ 826,300  
**Land Size** : 727 sqm  
**View** : <https://www.skylinerealestate.com.au/sale/nsw/northern-beaches/frenchs-forest/residential/house/5823935>



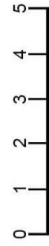
**Stuart Bath**  
02 9452 3444



### UPSTAIRS



### DOWNSTAIRS



Scale in metres. Indicative only. Dimensions are approximate. All information contained herein is gathered from sources we believe to be reliable. However we cannot guarantee its accuracy and interested persons should rely on their own enquiries.



### SITE

DOWNSTAIRS	: 46m <sup>2</sup>
UPSTAIRS	: 107m <sup>2</sup>
CARPORT	: 36m <sup>2</sup>
SHED	: 6m <sup>2</sup>
EXT	: 49m <sup>2</sup>

37 Parni Place, Frenchs Forest