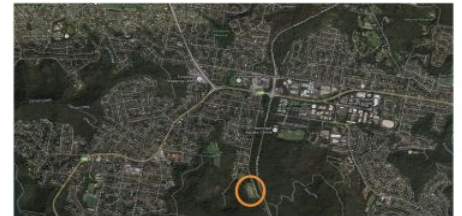


**630sqm Vacant Building Block in New Subdivision**

Outline is Approximate Only



Close to All Amenities and the New Frenchs Forest Hospital  
Surrounded by Bushland



**210 Bantry Bay Road Frenchs Forest NSW**

Located at the end of Bantry Bay Road is Lot 16 in this prime subdivision of 17 new blocks of land. This is the only block currently for sale in this subdivision.

Build your dream home amongst quality new homes  
Gentle slope from front to back with City & Chatswood views

Close to the new Frenchs Forest Hospital, Schools, bus stops and Shops

Services connected and new sealed roadworks

Surrounded by Garigal National Park

This is an excellent opportunity to build your new home and reap the rewards

Price guide is \$1,200,000 to \$1,225,000.

**Price** : \$ 1,300,000  
**Land Size** : 633 sqm  
**View** : <https://www.skylinerealestate.com.au/sale/nsw/northern-beaches/frenchs-forest/residential/land/5824152>



**Stuart Bath**  
**02 9452 3444**