



**17 Tamworth Place Allambie Heights NSW**

3 2 2

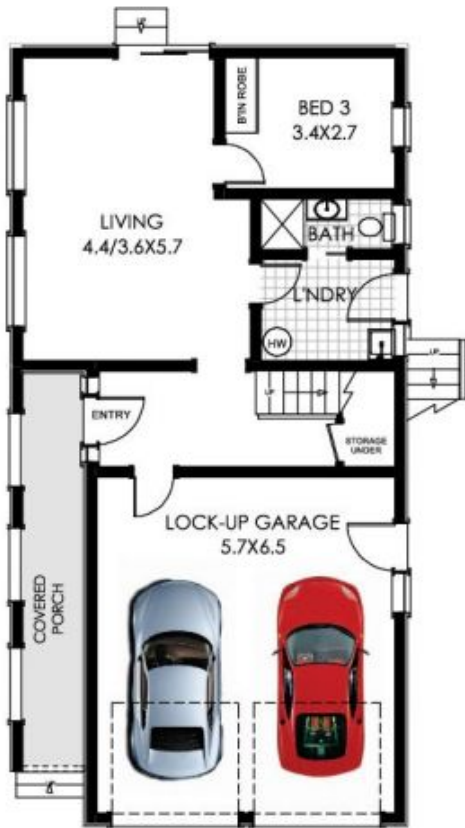
From its elevated position above a peaceful cul-de-sac, this impeccably presented two storey home showcases leafy district views across to Manly and the City, nestled on a 651sqm corner block. With living areas on both levels, a large balcony and wrap-around yard, this home is the ideal family entertainer with plenty of room for the kids to play. Located within minutes to shops, cafes, restaurants and Allambie Heights Public School, this home is ready for a new family to move in and enjoy the carefree lifestyle on offer.

Three well-sized bedrooms, all with built-in wardrobes and ceiling fans  
Modern kitchen with gas cooking and dishwasher, leading to balcony and backyard access  
Multiple living areas including loungeroom on lower level plus lounge and dining with air conditioning on top level

**Price** : \$ 1,350,000  
**Land Size** : 651 sqm  
**View** : <https://www.skylinerealestate.com.au/sale/nsw/northern-beaches/allambie-heights/residential/house/5824310>



**Stuart Bath**  
**02 9452 3444**



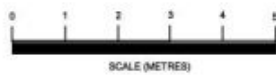
**GROUND FLOOR**



**LEVEL 1**

## ALLAMBIE HEIGHTS

INTERNAL FLOOR AREA APPROX 180 m<sup>2</sup>



All information contained herein is gathered from sources we consider to be reliable. However we cannot guarantee or give any warranty about the information provided and interested parties must solely rely on their own enquiries. General Site plan is approximate only and shows a general layout of the land.



**GENERAL SITE PLAN  
(NOT TO SAME SCALE)**