



43 Epping Drive Frenchs Forest NSW

4 🏠 2 🚗 2 🚗

Perfectly positioned on a mostly level 698m² rectangular shaped block and located in a quiet and leafy street in one of Frenchs Forests most popular pockets. This solid family home is a terrific opportunity suitable to a variety of buyers.

Type : House
Price : \$ 2,400,000
Land Size : 698 sqm
View : <https://www.skylinerealestate.com.au/sale/nsw/northern-beaches/frenchs-forest/residential/house/8136010>

Spread over two levels with multiple living and outdoor areas there is plenty of room to entertain family and friends or unwind and relax in peace away from the rest of the family.

The heart of the home like all good homes is the gourmet kitchen offering quality appliance, with Caesar Stone finished benchtops and ample cupboards ensuring every meal is a pleasure.

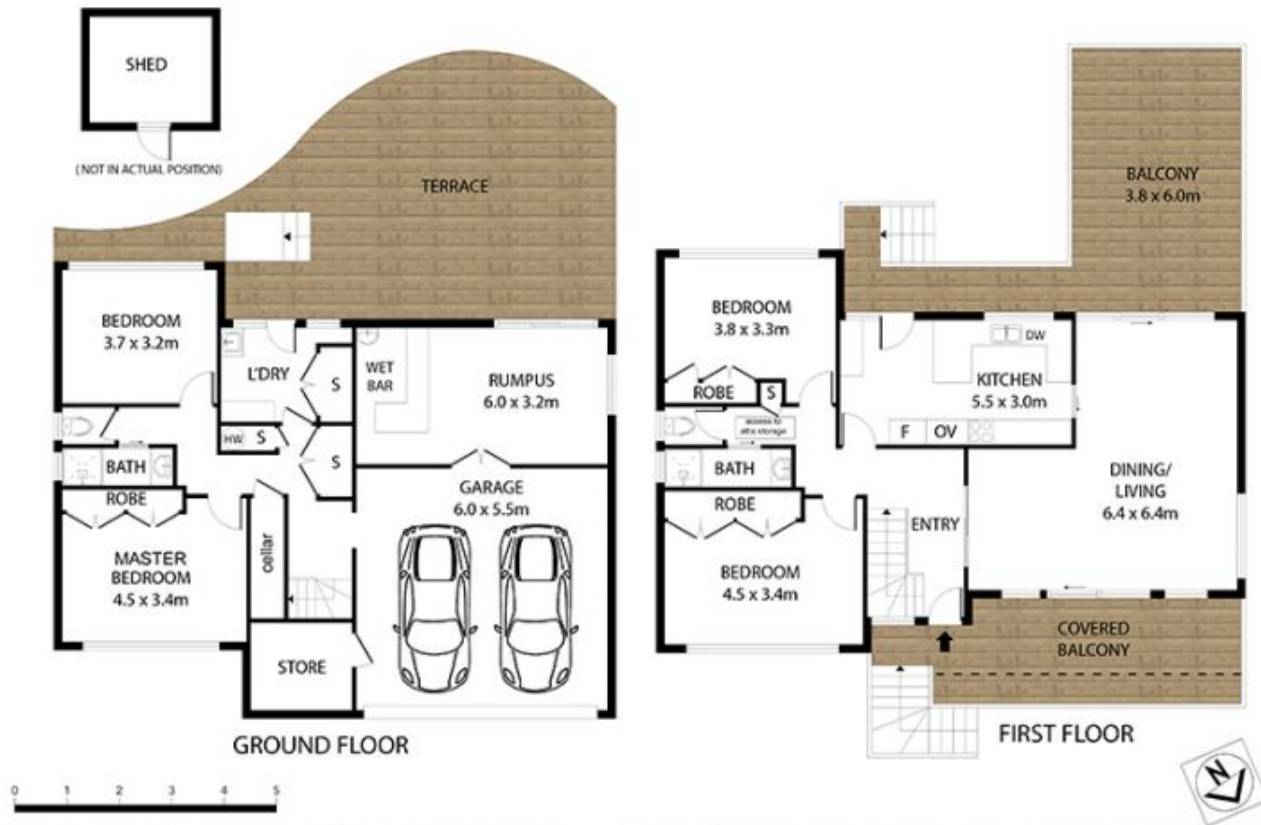
[For full version visit the website](#)



Damien Dwyer
02 9452 3444



Stuart Bath
02 9452 3444



Scale in metres. Indicative only. Dimensions are approximate. All information contained herein is gathered from sources we believe to be reliable. However, we cannot guarantee its accuracy and interested persons should rely on their own enquiries.

43 Epping Drive, Frenchs Forest